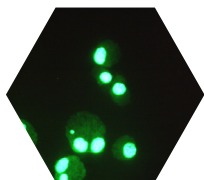


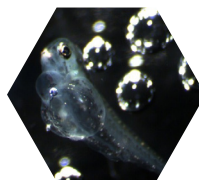
Contract Research Services

Regular and Predictive toxicology Assays



GLP Regular Toxicity

- General toxicology
- Genotoxicity



Predictive toxicology

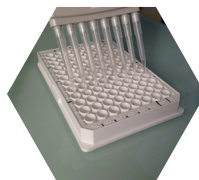
Zebrafish - ADME Tox



Endocrine Disruptors (EDs)

Agonists and antagonists

- Estrogen receptors (OECD 455)
 - ER Alpha and ER Beta
- Androgen receptors (AR) (OECD 458)



Customised R&D

On request

Domains



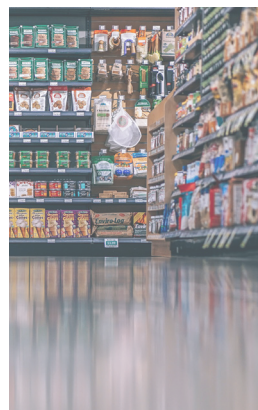
Pharmaceuticals



Cosmetics



Medical Devices



Agro-Food



Heath & Environment

- ADME Tox - Zebrafish
- Endocrine Disruptors Bioassays

- Efficiency Effects
- GLP Regular Toxicology
- Endocrine Disruptors Bioassays

- ISO 10 993
- ASTM
- Connected Bracelets
- Endocrine Disruptors Bioassays

- Packaging
- Test Methods for Migration
- Endocrine Disruptors Bioassays

- Global Toxicity
- DNA Damage
- Endocrine Disruptors Bioassays



atoxigen

predictive toxicology center

Medical Devices

Biocompatibility Evaluation according to ISO 10 993

Customised R&D - Customised Bench-loop

◆ GLP Compliance

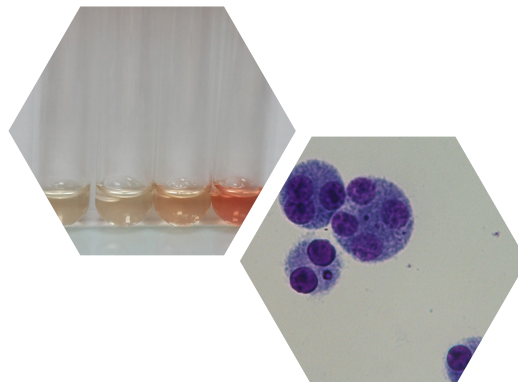
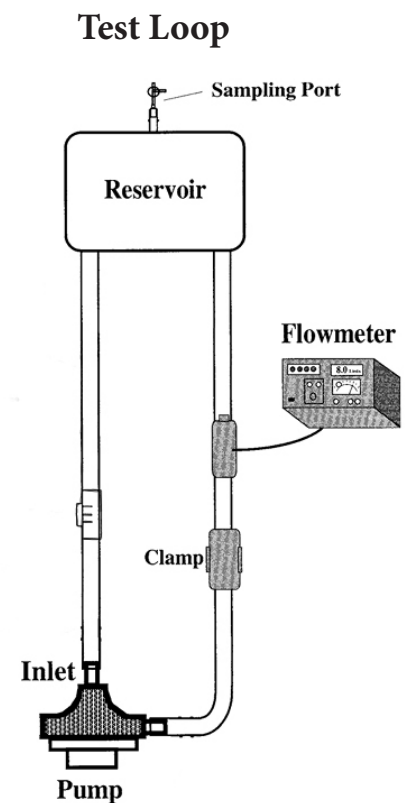
◆ *In vitro* assays

- Customised assays
- Cytotoxicity ISO 10 993-5
- Genotoxicity ISO 10 993-3
- Hemocompatibility Testing ISO 10 993-4,
ASTM F756, ASTM F1841
 - Hemolytic Properties of Materials
 - Thrombosis
 - Coagulation : PTT
 - Immunology : complement activation
 - Hemolysis in Continuous Flow Blood
- Endocrine Disruptors assays
OECD 455, OECD 456

◆ *In vivo* assays

(Partnership)

- On request



Atoxygen SAS
Tel : +33 5 57 10 28 89
contact@atoxygen.com



atoxygen.com



@AtoxygenSAS



@Atoxygen